

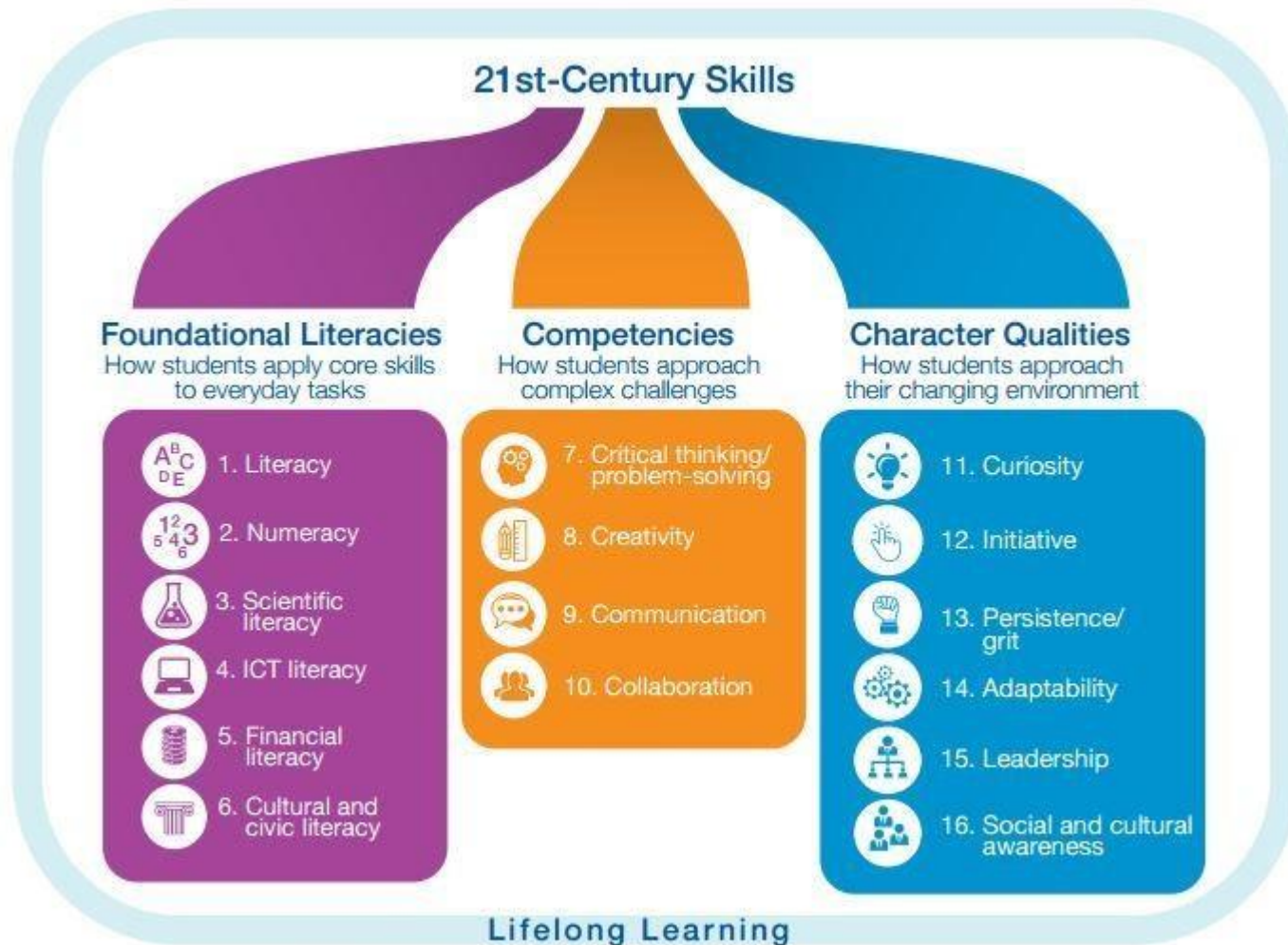
# Where are we?

(...the LORD God called to the man, “Where are you?” Genesis 3:9)

## Teaching Soft Skills

...or killing softly  
natural learning potential

Exhibit 1: Students require 16 skills for the 21st century



Note: ICT stands for information and communications technology.

Source: World Economic Forum

Exhibit 3: A variety of general and targeted learning strategies foster social and emotional skills



Source: World Economic Forum



Building a castle...



## ... or falling in the trap of "The Sand Pile Effect"

a term coined to express the concept that some systems will sometimes present configurations so complex that the patterns of interactions between their components will inevitably lead to catastrophic results.





## TEACHING IN THE BOX

**Strategic verbs that don't trust the child to be capable of initiative, independent decisions and creativity:**

**Encourage** play-based learning

**Break down** learning into small co-ordinated pieces

**Create** a safe environment for learning

**Develop** a growth mindset

**Foster** nurturing relationships

**Allow** time to focus

**Foster** reflective reasoning and analysis

**Offer** appropriate praise

**Guide** a child's discovery of topics

**Help** children **take advantage** of their personality and strengths

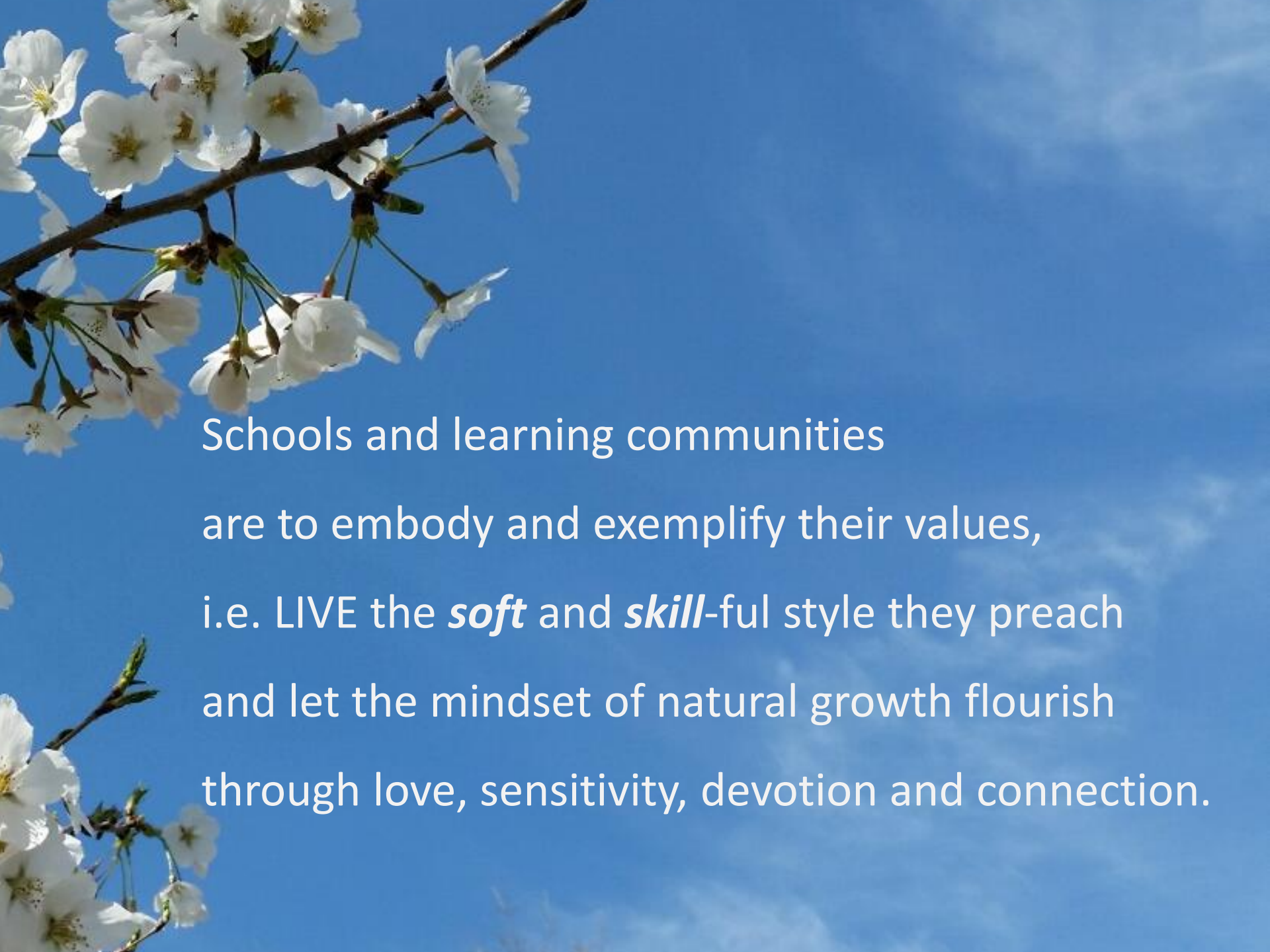
**Provide** appropriate challenges

**Offer** engaged caregiving

**Provide** clear learning objectives targeting explicit skills

**Use** hands-on approach

To avoid collapse or implosion...

A close-up photograph of a branch with white cherry blossoms. The flowers are in various stages of bloom, with some fully open and others as buds. The background is a clear, bright blue sky with some light, wispy clouds. The text is overlaid on the right side of the image.

Schools and learning communities  
are to embody and exemplify their values,  
i.e. LIVE the *soft* and *skill*-ful style they preach  
and let the mindset of natural growth flourish  
through love, sensitivity, devotion and connection.



# How?

ROERICH School Practice	Values	DRITA School Practice
<b>Assembly and School Committees</b>	Democracy and Active Citizenship	<b>School Council</b>



# How?

ROERICH School Practice	Values	DRITA School Practice
<b>Assembly and School Committees</b>	Democracy and Active Citizenship	<b>School Council</b>
<b>I Teach You, Close Person</b>	Caring for others	<b>Leadership Academy, Peer to Peer</b>





# How?

ROERICH School Practice	Values	DRITA School Practice
<b>Assembly and School Committees</b>	Democracy and Active Citizenship	<b>School Council</b>
<b>I Teach You, Close Person</b>	Caring for others	<b>Leadership Academy, Peer to Peer</b>
<b>School Selectives</b>	Freedom of Choice and Self-directed Learning	<b>Workshops</b>





# How?

ROERICH School Practice	Values	DRITA School Practice
<b>Assembly and School Committees</b>	Democracy and Active Citizenship	<b>School Council</b>
<b>I Teach You, Close Person</b>	Caring for others	<b>Leadership Academy, Peer to Peer</b>
<b>School Selectives</b>	Freedom of Choice and Self-directed Learning	<b>Workshops</b>
<b>Project Based Learning and LOTS</b>	Curiosity, Natural Learning Method, Holistic Approach	<b>Project Based Learning and Academic Challenges</b>





# How?

ROERICH School Practice	Values	DRITA School Practice
<b>Assembly and School Committees</b>	Democracy and Active Citizenship	<b>School Council</b>
<b>I Teach You, Close Person</b>	Caring for others	<b>Leadership Academy, Peer to Peer</b>
<b>School Selectives</b>	Freedom of Choice and Self-directed Learning	<b>Workshops</b>
<b>Project Based Learning and LOTS</b>	Curiosity, Natural Learning Method, Holistic Approach	<b>Project Based Learning and Academic Challenges</b>
<b>Class Choir, Sugestopedia, Arts</b>	Creative Growth Mind	<b>Genius Hour</b>







Trust, connect, create

On a daily basis

On a personal,

team,

school,

community,

national,

global level...

ASAT 😊

